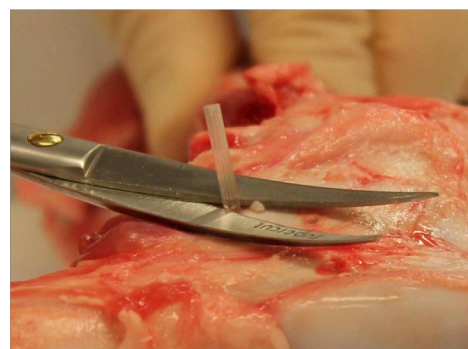
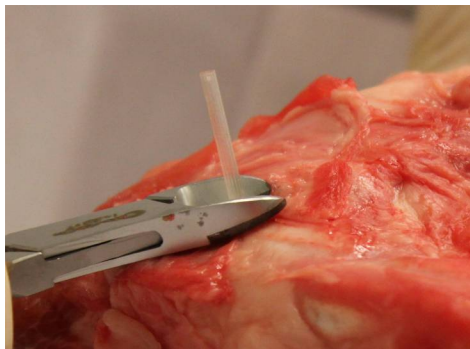
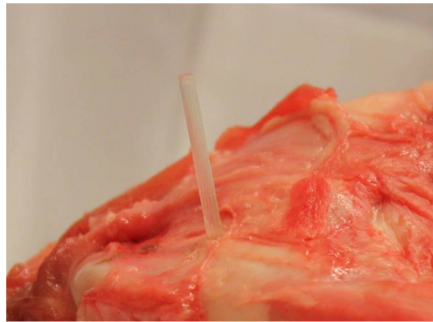


## ADDITIONAL INFORMATION TO SURGICAL TECHNIQUE: Cutting of ActivaPin™

1. After insertion, if the pin is too long, any surgical cutting device e.g. scissors, reciprocating saw, or a hot wire can be used to cut the **ActivaPin™**. Some examples of cutting of the **ActivaPin™** are demonstrated in the following chapters. (The photos do not show the real situation in the operation room but are merely illustrative.)
2. When the **ActivaPin™** has been cut, the proximal end of the pin must be pushed 1-2 mm below the cortical surface or smoothed at least to the cortical level, to avoid soft tissue irritation.

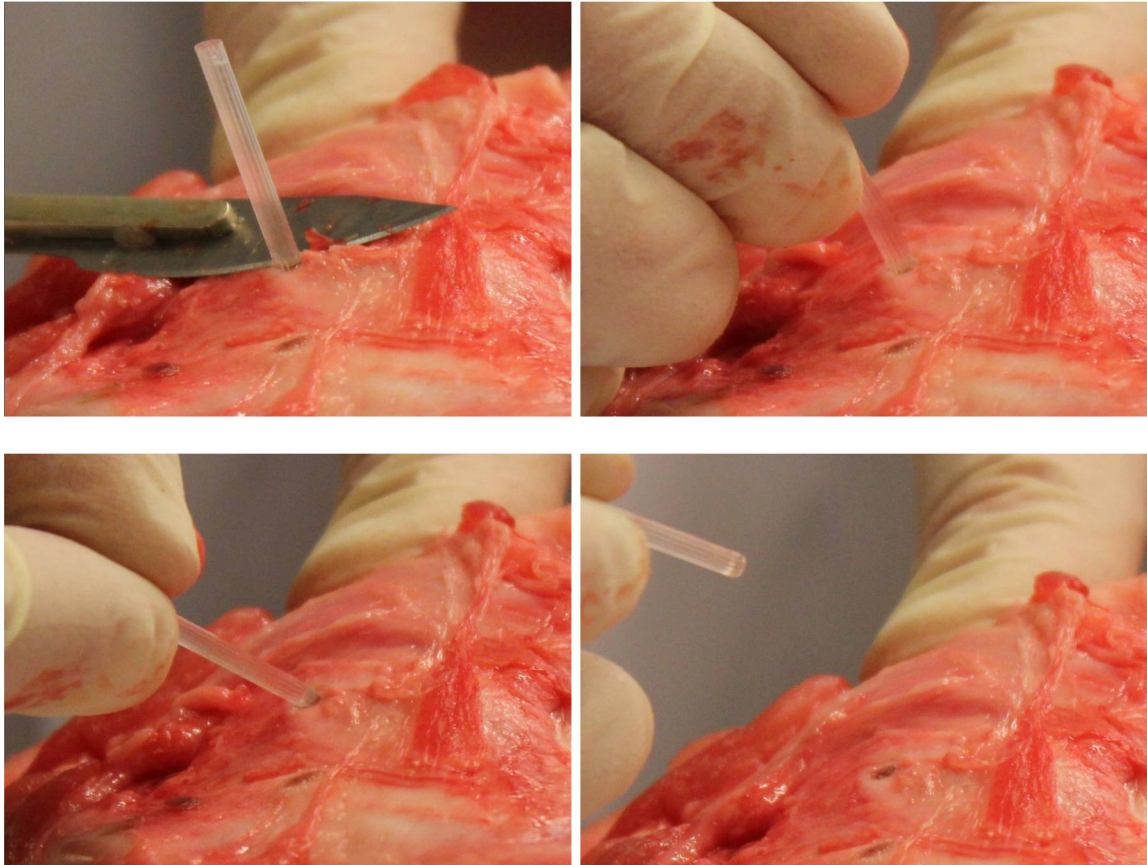
### A. Cutting with pliers or scissors:

- Cut the **ActivaPin™** with pliers or scissors to the cortical level



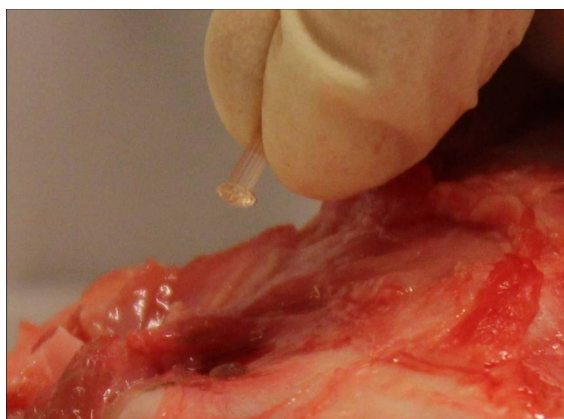
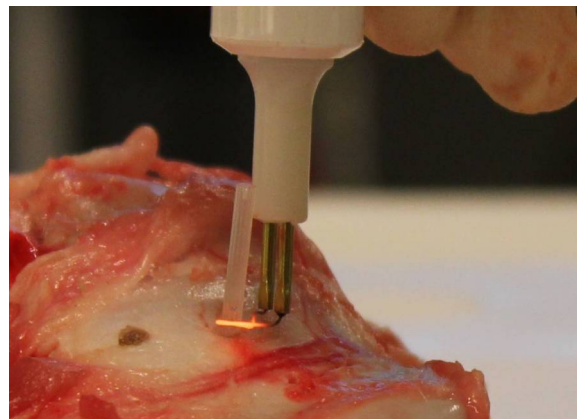
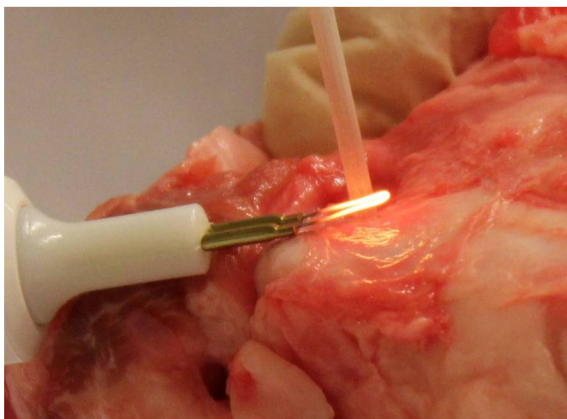
B. Cutting with surgical knife:

- Make a small notch with surgical knife to the shaft of the **ActivaPin™** on the cortical level
- Bend **ActivaPin™** until it breaks and smooth the end of the pin, if necessary



C. Cutting with hot wire:

- Use of the hot wire
  - Remove the cover cap of the hot wire
  - Press the switch key of the hot wire until the cautery wire glows
  - After that, cut the **ActivaPin™** near the cortical surface
  - After cutting place the cap on top of the wire and ensure it is properly locked
- Note: The cautery wire can be bent to desired angle in order to cut the pin in space restricted areas e.g. in mini-invasive cases



D. Smoothing of cut ActivaPin™ to the cortical level using hot wire:

- In spite of surgical cutting device, the end of the cut ActivaPin™ can be smoothed with hot wire to the cortical level as follows:
  - Keep the glowing cautery wire close to the proximal end of the cut pin until the end of the pin has melted and smoothed to the cortical level

